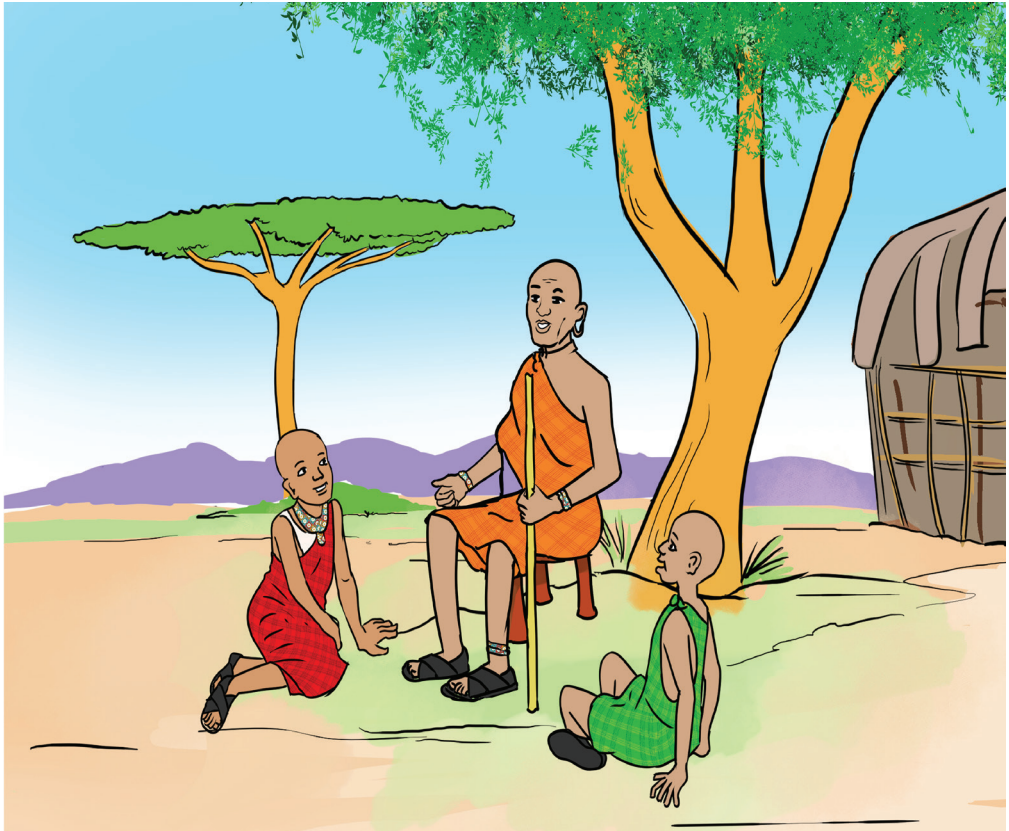


Maasai

EMBUKU E NKUTUK OOLMAASAE
MAISUMA ENKUTUK ANG'
ENGIRED E DUKUYA
EMBUKU OO LOOITENG'ENI



OLAPA LE IMIET 2023

© KENYA INSTITUTE OF CURRICULUM DEVELOPMENT

Ore naati atua ena buku naa enolopeny. Mepejuni taa imatuan ena buku nemeshumi sii tiatua imashinini arashu eirriwari te mpukunoto ake nara enara, too masaa edijitol, mashinini empejunoto arashu kulie otoi nemeishoruno toloigero.

Eigeroki tenkata edukuya to lari le 2023.

© Orkioma oitobir neutaa enkisuma te Kenya (KICD)

ISBN NO: 978-9914-43-249-7

Eigeroki nepejuni te

Kenya Institute of Curriculum Development

Osanduku le posta 30231-00100

NAIROBI-KENYA

Esimu: +254 729 327 334

+254 787 883 311

+254 729 327 331

Website: www.kicd.ac.ke

NAATII ENA BUKU

EMATUA E DUKUYA: ANG'	1
EMATUA E ARE: SUKUUL AI	13
EMATUA E UNI: OLKUA AK SIDAI	20
EMATUA E ONGU'AN: BIOTISHO.....	26
EMATUA E IMIET: ENKATA O RISHAT	34

EMATUA E DUKUYA: ANG'

A. Emaining'o

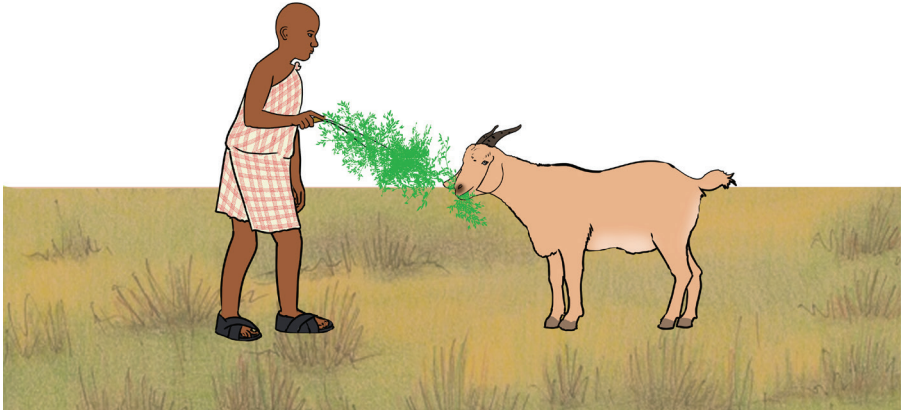
Enkias e dukuya

Nining'o osinkolio. Taranya.

Enkias e are


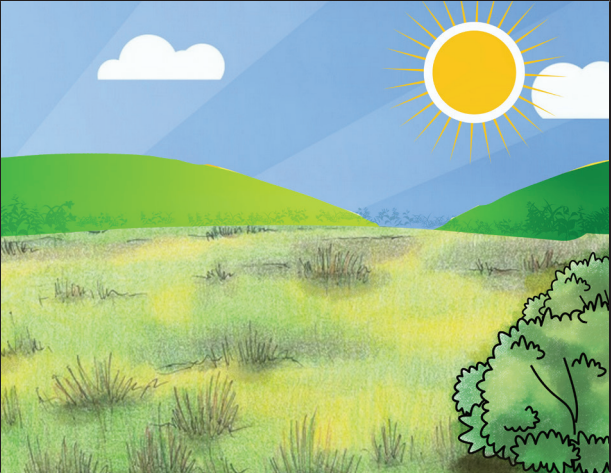

Tisipu kuna pishai.





Enkias e uni

Tisipu kuna pishai. Tolimu enkirorokino.

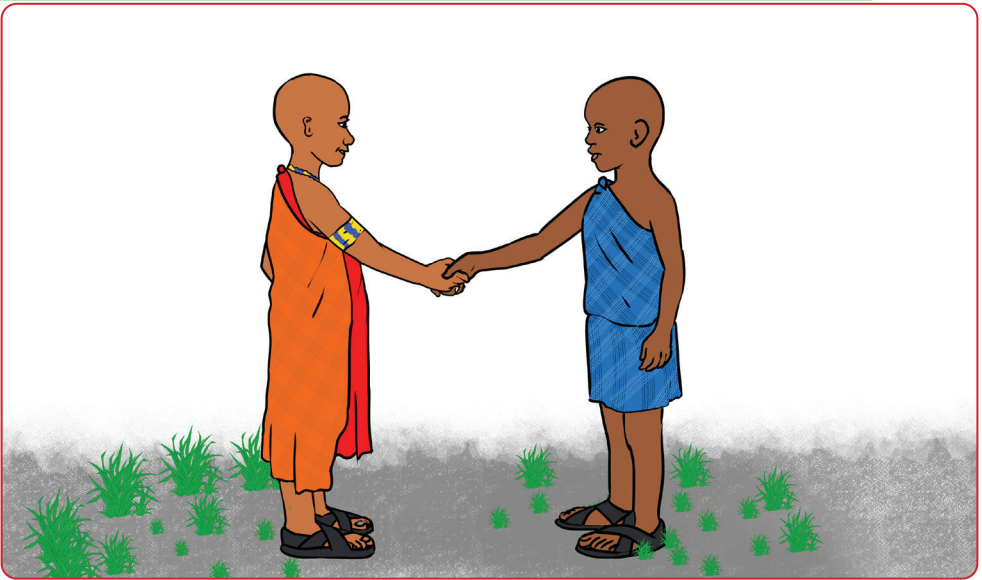
Empisha	Enkirorokino
 <p>A landscape illustration showing a bright sun with long, radiating rays rising over a horizon. The sky is a gradient of yellow and orange. Below the horizon are green rolling hills and a field of green grass with some darker patches. A single green bush is on the right side.</p>	
 <p>A landscape illustration with a bright yellow sun in a clear blue sky. There are a few white clouds. The sun is positioned in the upper right quadrant. Below the sky are green rolling hills and a field of green grass. A single green bush is on the right side.</p>	
 <p>A landscape illustration showing a bright sun low on the horizon, partially obscured by a green hill. The sky is a gradient of orange and yellow. Below the horizon are green rolling hills and a field of green grass. A single green bush is on the right side.</p>	

Empisha



Enkirorokino

B. Emairoro





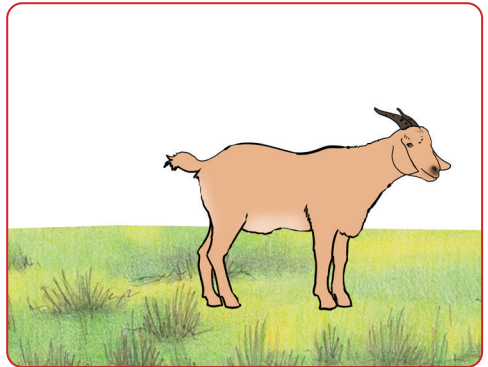
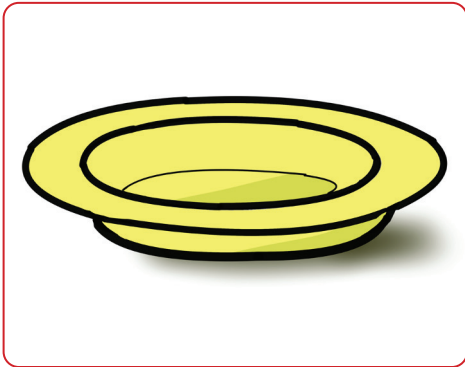
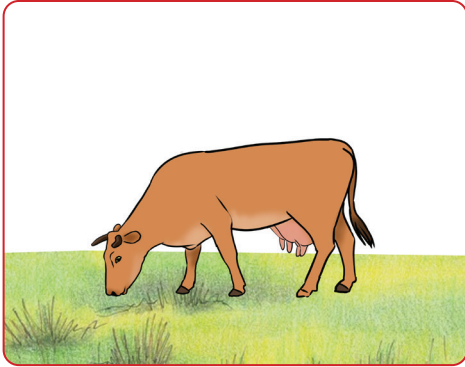
Tejo kulo rorei	
1. Supa	2. Olesere
3. Kejaa e nkakenya	4. Kejaa e ndama
5. Kejaa e nteipa	6. Enkewarie sidai

Enkias e are

Maigurana enkiguran enkirorokino.

Enkias e uni

Tisipu kuna pishai. Kanyoo idolita?

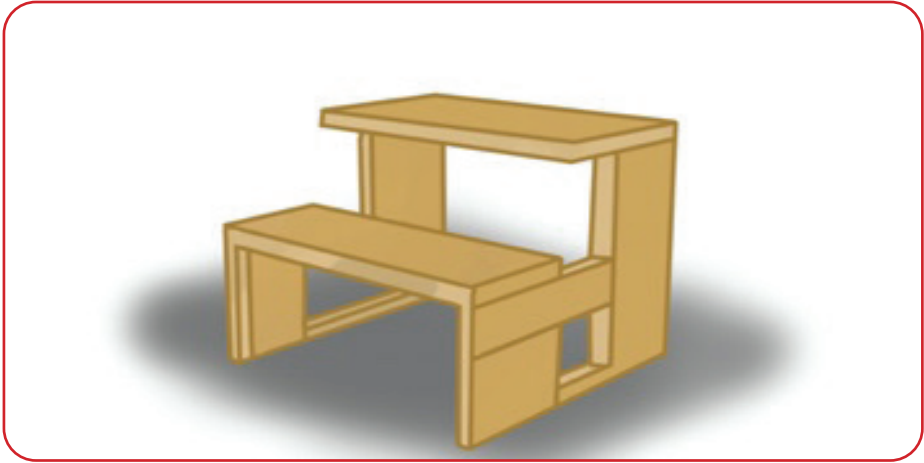


C. Emaisuma

Enkias e dukuya

Tisipu kuna pishai. Tuutu ntokiting naatumi tiang’.







Enkias e uni

Entolikinoto inkarn oo ntokitin naatii ang'.

D. Emaigerisho

Enkias e dukuya

Ngero kulo kigerot to oloing'ang'e.

a e i o u

Enkias e are

Entaasisho maare. Entobiru kulo kigerot te sarng'ab.

Aa Ee Ii Oo Uu

Enkias e uni

Ingero ilkigerot lintobirua te mbuku ino.

Enkias e ong'uan

Tipika imuain kulo kigerot.

Aa Bb CHch
Dd Ee Ff Hh
Ii Jj Kk Ll
Mm Nn Oo Pp
Ss SHsh Tt
Rr Uu Ww Yy

Enkias e imiet

Mputa iwuejitin nemetii ilkigerot.

A	B	CH		E
F	G	H		
	L			O
P		S	T	U
W	Y			

Enkias e ile

Mpirie lkigerot sapuki o lkutiti.

A	h
B	f
CH	e
D	a
E	i
F	d
G	j
H	ch
I	b
J	g

EMATUA E ARE: SUKUUL AI

A. Emaining'o

Enkias e dukuya

- Nining'o nilimu kulo kigerot eisumakini intae.
- Ng'ura kuna pukunot. Kainyoo idolita?



- Toliki enitashare arashu olitashare.

Enkias e are

Ore irara maare;

- Entolimu enajo ilkigerot otii atua mpukunot te nkias e dukuya.
- Inining'o oliboitare arashu eniboitare elimu enajo ilkigerot.

Enkias e uni

Ore irara maare;

- Entutumo mpukunot naanyaanyuk.
- Tolimu ilkigerot otii atua?
- Entolikinoto enajo ilkigerot.
- Inining’o oliboitare arashu eniboitare eisumita lelo kigerot.

Enkias e ong’uan

- Inining’o olaiteng’enani elimu rorei.
- Toorioro lelo rorei nintayu irubat naapaasha.
Anaa;

ne+na = nena

sho+mo = shomo

- Isuma nena rubat pooki.
- Inining’o olitashare arashu enitashare eisumita irubat pooki.

B. Emairoro

Enkias e dukuya

- Toliki olitashare arashu enitashare mbaa oshi naasi te ndarasa.
- Kainyoo tipat enkanyit.

Enkias e are

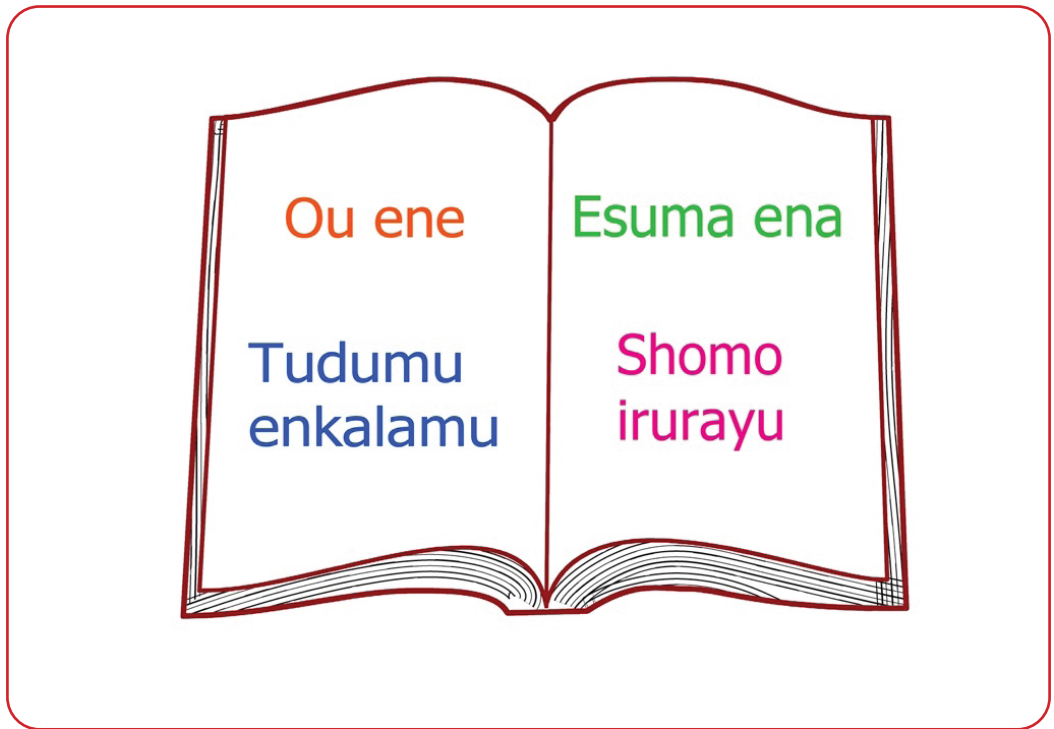
- Ng’ura ena pisha.



- b. Kaa egira olaiteng'enani ajoki Nashipae?
- c. Kaa eishaakino neas Nashipae?
- d. Kainyoo pee eas Nashipae enatiakaki?

Enkias e uni

- a. Ng'ura ena pisha.




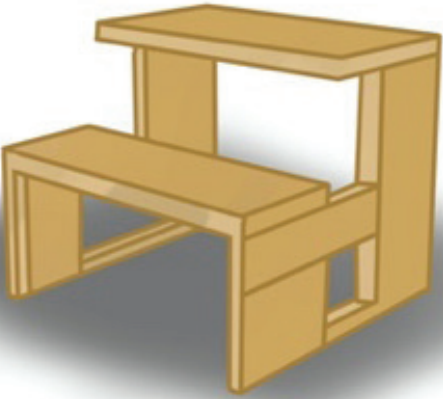


- b. Tegelu osirata obo.
- c. Tiaaki olitashare arashu enitashare metaasa enajo osirata.

C. Emaisuma

Enkias e dukuya

Ore tolturrurri:

- a. Ng'ura kuna pishai.

	<p>embao</p>
	<p>emisa</p>
	<p>oltuala</p>
	<p>empira</p>

Kakua toiloishi oiteru kulo rorei.

Enkias e are

a. Tejo iltoloishi lookigerot ootii kulo rorei.

E-n-k-a-l-a-m-u

S-u-k-u-u-l

E-m-i-s-a

E-n-k-i-w-a-n-cha

b. Isuma kulo rorei.

Enkalamu

Sukuul

Emisa

Enkiwancha

Enkias e uni

Ore irara maare;

a. Eimaki ntokiting naatumi te sukuul.

b. Isuma kulo rorei.

Olorika

emisa

embao

empentera

olchukaa

embuku

enkalamu

eraba

D. Emaigerisho

Enkias e dukuya

Ngero kulo rorei to oloing'ang'e.

- a. emisa
- b. olorika
- c. empentera

Enkias e are

Mputa iwuejitin neetung'uayioki too ilkigerot oishaa.

- a. Enk-lamu
- b. Emb-ku
- c. Ol-rika
- d. Em-sa

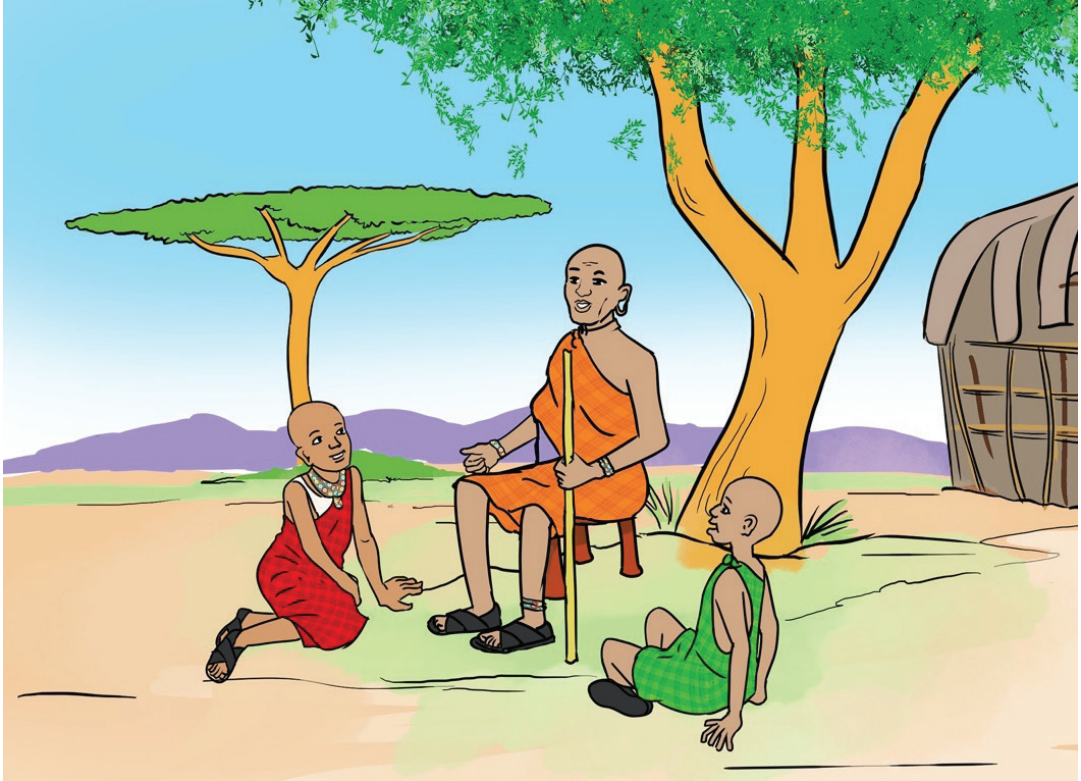
Enkias e uni

- a) Nining'o sirat oisum olaiteng'enani.
- b) Ngero lelo sirat.

EMATUA E UNI: OLKUAAK SIDAI

A. Emainining'o

Enkias e dukuya



- Nining'o enkatini eisumakini intae.
- Kainyoo eimaki ina atini?
- Tolimu inkarn ooltung'anak ootii ina atini.
- Tolimu rorei oitodolu olkuaak sidai teina atini.

Enkias e are

Ore toolturrurri;

a. Niningo olaitengenani einosu enkatini.

b. Nosaki nkulie ina atini.

B. Emairoro

Enkias e edukuya

a. Taranya ena kipolosa

Enkipolosa

Te nepuonu ilomon naitoomon

Nang'asaki ilomon

Te nepuo ilomon najoki olesere

Te naaishori nkishoorot najo ashe

Te nayieu toki naomonu te nkanyit

Te nainyial likae naomonu empalikino

a. Kainyoo eimaki ena kipolosa?

b. Kakua rorei ooitodolu ajo keeta olaranyani olkuaak sidai.

Enkias e are

a. Engurana kuna kirorot

Naserian: Lekishon, aaomon enkalamu nabo.

Lekishon: Nabo ake aata. Toomono Sankau. Keeta ninye are.

Naserian: Ayia. Sankau, nchooki enkalamu nabo.

Sankau: Nko. Tushukoki tenindip aigerisho.

Naserian: Kashuku. Ashe oleng’.

b. Kakua rorei oitodolu olkuaak sidai too kuna kirorot?

Enkias e uni

Engurana tolturrurri.

a. Tudumu ororei obo to olkikapu loo rorei.

b. Ntoduaa ilo rorei ilkulikae turrurri.

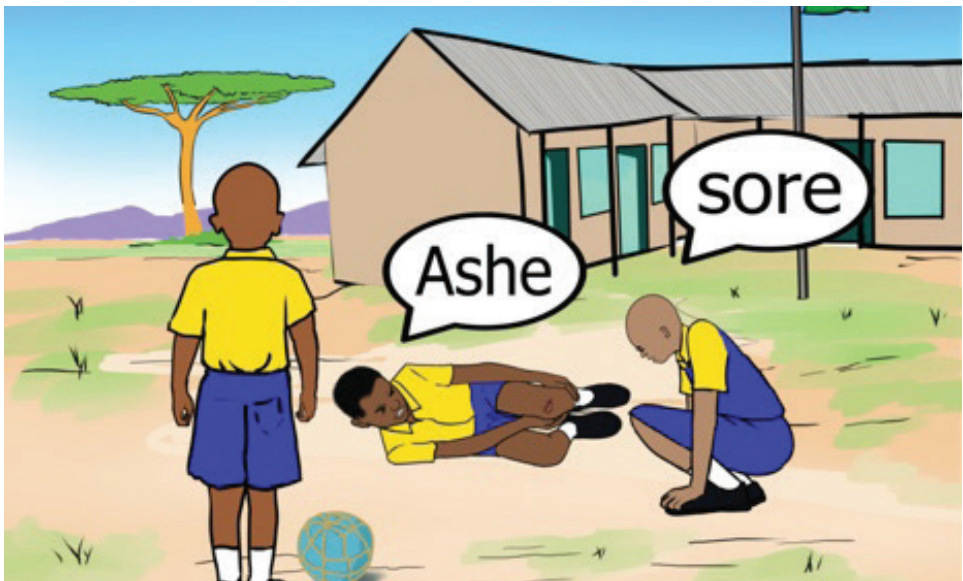
c. Tiaaki meitobira osirata teilo rorei.

Ore irara maare, eimaki rorei le nkanyit te sukuul inyi.

C. Emaisuma

Enkias e dukuya

a. Ore irara maare, eng’ura kuna pishai.





b. Kainyoo idolitata?

c. Esuma irorei ootii nena pishai.

Enkias e are

a. Entarany osinkolio eutaa intae olaiteng'enani.

b. Kakua rorei oitodolu olkuaak sidai te ilo sinkolio?

Enkias e uni

a. Isuma kulo omon.

Aaomon, tapalikiaki, ashe, akiti, aaitomon

b. Tuutu kulo omon to sanduku otii abori.

a	s	h	e	h	c	d	k	d	m	i
i	a	u	g	s	e	w	p	w	f	p
t	a	p	a	l	i	k	i	a	k	i
o	r	o	y	r	j	p	s	o	t	s
o	s	l	s	a	k	i	t	i	o	u
m	i	h	i	s	o	w	p	l	p	f
o	w	f	e	a	a	o	m	o	n	p
n	i	g	u	y	u	y	e	p	d	p

D. Emaigerisho

Enkias e dukuya

- Nining' o olaiteng' enani eisum irorei.
- Ngero lelo rorei te mbuku ino.

Enkias e are

Mputa neetung' uayioki.

- _____ toosho oltuala. (ashe, aaomon)
- _____ keidimayu nalo boo? (aaomon, aaitoomon)
- _____ amu aimutie. (Atejo, tapalikiaki)
- _____ te enkalamu. (ashe, tapalikiaki)

Enkias e uni

Ngero kulo sirat anaa enatiu.

1. Tapalikiaki aatororua.
2. Ashe amu kinchoo enkare.
3. Aaomon nchooki endaa.
4. Akiti siiyie mairoro.

EMATUA E ONGU'AN: BIOTISHO

A. Emainining'o

Enkias e dukuya

a. Nining'o ele sinkolio nirany.

Te nadumunye tadekenya

Ooyie leyio

Naisuj enkomom, o sesen lai

Ooyie leyio

Naisur ilpapit, naik ilala

Ooyie leyio

Naishop inkilani sidan

Ooyie leyio

Nemetii oloirerio

Ooyie leyio

Naosh inamuka oranki

Oyie leyio Oyie leyio

b. Taranyaki olitashatare arashu enitashare ilo sinkolio.

c. Te nilo ang', taranyaki ntoiwuo ele sinkolio.

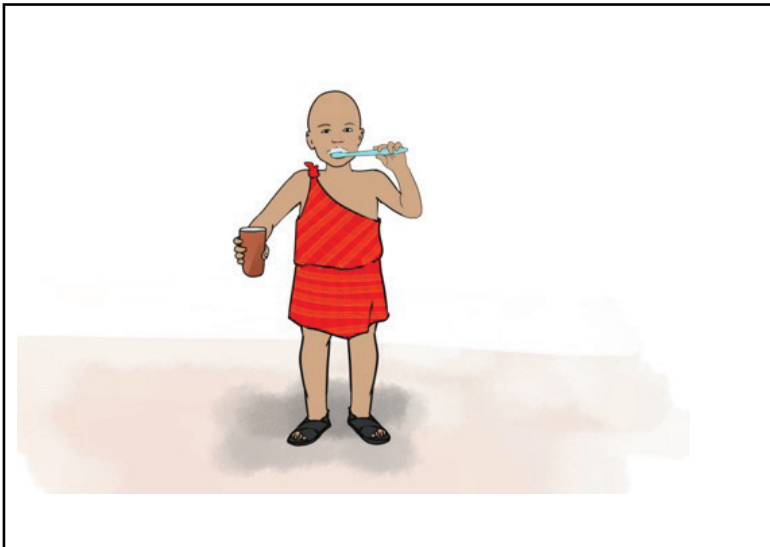
Enkias e are

- Nining'o ena kipolosa.
- Toliki enkaiteng'enani
- Enaas olaranyani tenedumunye?

Enkias e uni

- Tisipu kuna pishai.





b. Tolimu enaasita inkera te kuna pishai.

B. Emairoro

Enkias e dukuya

a. Tejo enatejo olaiteng'enani.



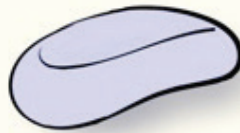
Enkishanuo



Olchani loo lala



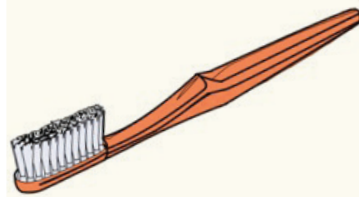
Enkitampaa
olkulup



Osabuni



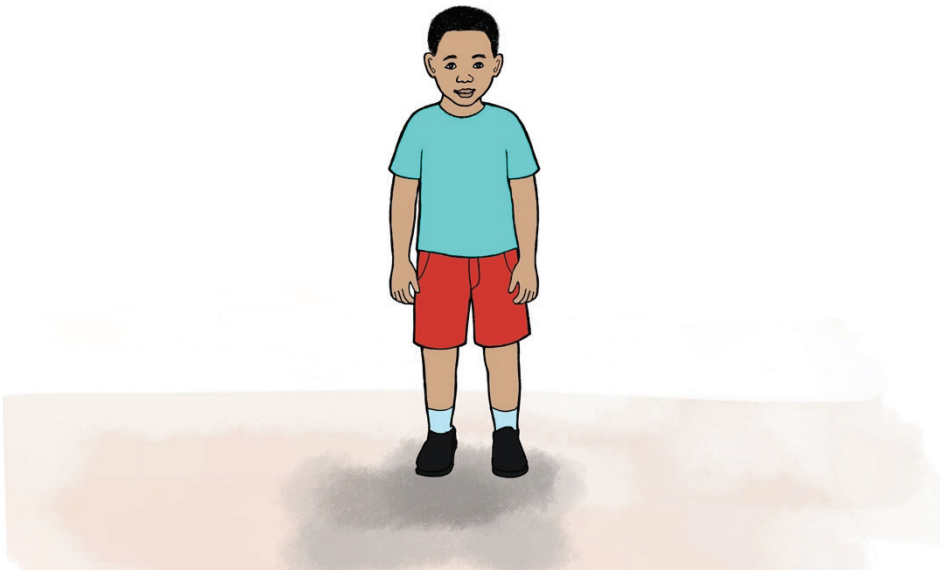
Eoret



Enkike

Enkias e are

a. Tisipu niimaki ena pisha.



Enkias e uni

a. Taranya ele sinkolio.

Mimutie ilo airura, tayooki inyo,

Isuja enkomom o nkaik,

Isuja inkejek o sesen

Iika ilala, isuro ilpapit.

Nchopo nkilani sidan o namuka,

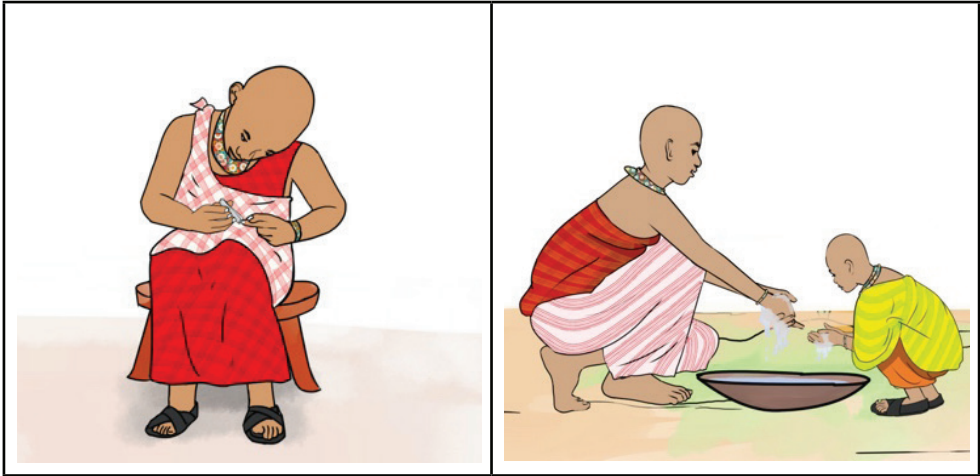
Shomo sukuul amu isula.

b. Entarany ilo sinkolio enkolong' niatata emasho te sukuul.

C. Emaisuma

Enkias e dukuya

Ng'ura kuna pishai. Toliki olitashare arashu enitashare entoki nitoduaa.



Enkias e are

Isuma enkatini. Niwalu nkikilikuanat.

Pereruan entito sidai

Kaaji Pereruan. Kara entito. Agira aisuj inkaik aainei. Kanyorr nanu inkaik nemetii oloirerio. Kanyor iloisotok lainei. Kadung', naisuj. Keyau moyiaritin te nemeitukui. Maisuja nikedung' iloisotok lang'.

Nkikilikuanat

1. Kainyoo eimaki ena atini?

2. Kaji eiko Pereruan teneramat iloisotok lenyenak?

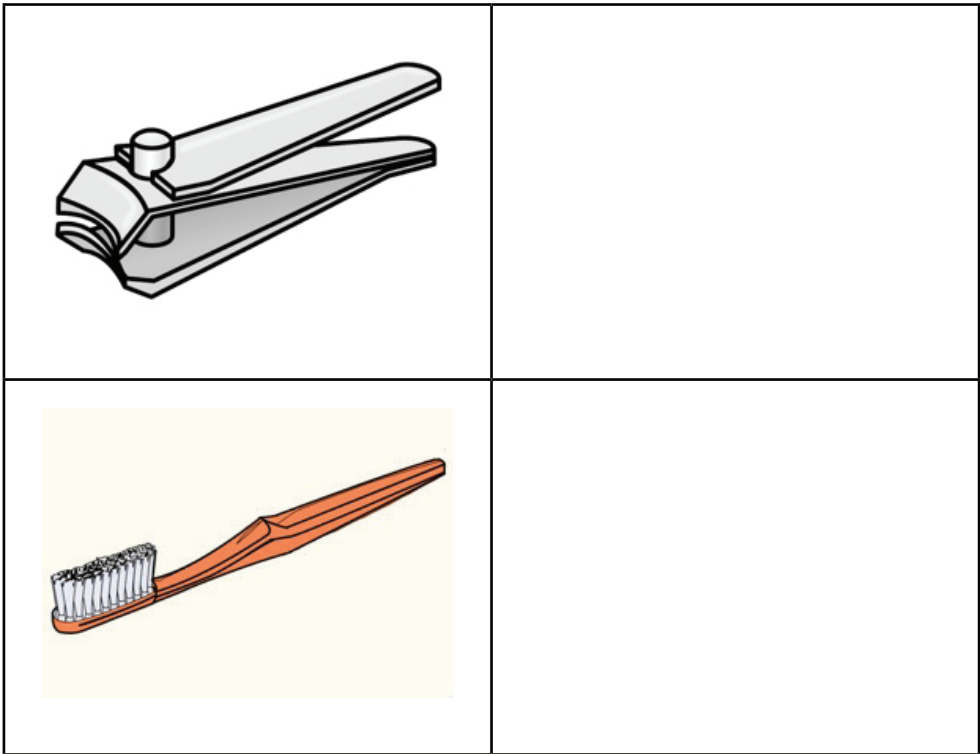
3. Kainyoo eyau iloisotok lemeitukui?

D. Emaigerisho

Enkias e dukuya

a. Ngero enaasieki kuna tokiting.

	<ul style="list-style-type: none">- Keisujishoreki- Neisujareki
	
	



Enkias e are

Inchora nipik oranki kuna tokiting.

Enkike	Enkitampaa olkulup
--------	--------------------

Ntodua entoiwuoi entoki ninchora tenilo ang.

Enkias e uni

Mputa iwuejitin neetung'uayioki too lkigerot oishaa.

- a) i-ka
- b) nt-kuo
- c) enk-ke
- d) enkish-nuo

EMATUA E IMIET: ENKATA O RISHAT

A. Emaining'o

Enkias e dukuya

Tisipu kuna pishai.

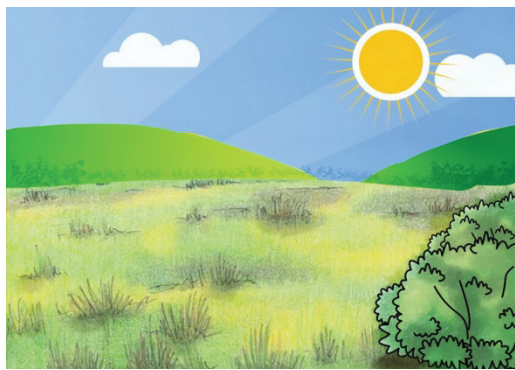
Tolimu esaa naitodolu.



Saa nabo e ntadekenya.



Maape sukuul.



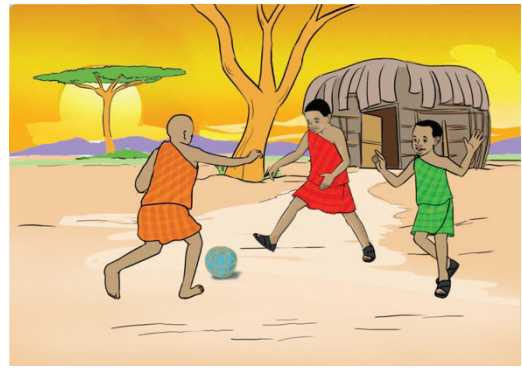
Saa naapishana e ndama.



Esaa endaa e ndama.



Saa tomon e nteipa.



Erishata e nkiguran.

Enkias e are

Taranya anaa enataranya olaiteng'enani.

Osinkolio

Ekenyua

Saa nabo e ntadekenya

Maape sukuul

Etaa saa ong'uan

Maape aaiguran

Etaa saa naapishana e ndama

Maape anya endaa e ndama

Etaa saa tomon

Maape ang'

Taranyaki intoiwuo inonok ele sinkolio te ang'.

B. Emairoro

Enkias e dukuya

Taranya ele sinkolio

Osinkolio

Eeta ewiki nkolong'i naapishana

Kaidim atolimu pooki

Enkolong' e dukuya

Enkolong' e are

Enkolong' e uni

Enkolong' e ong'uan

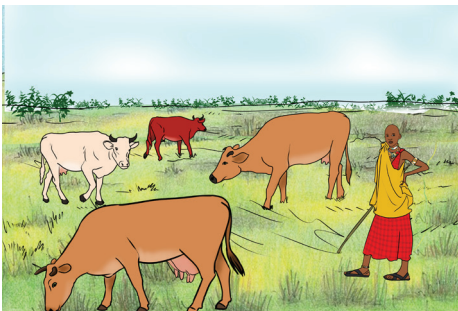
Enkolong' e imiet

Mampili kiti

Mampili sapuk

Enkias e are

Tisipu kuna pishai.



A



B

- Kainyoo idolita?
- Kainyoo easi too kuna rishat?

Enkias e uni

Taranya ena kipolosa

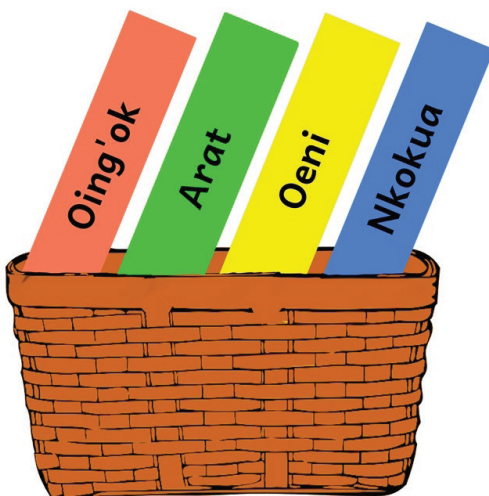
Irishat olari

Ore te neiropiju
Naij enkima
Ore te nesha.
Nebulu nkujit
Nepiru nkishu
Ore te neirowuaju
Nalo aarr enkare
Ore to lameyu
Nikindurrie inkishu

C. Emaisuma

Enkias e dukuya

Tudumu irorei nisum.



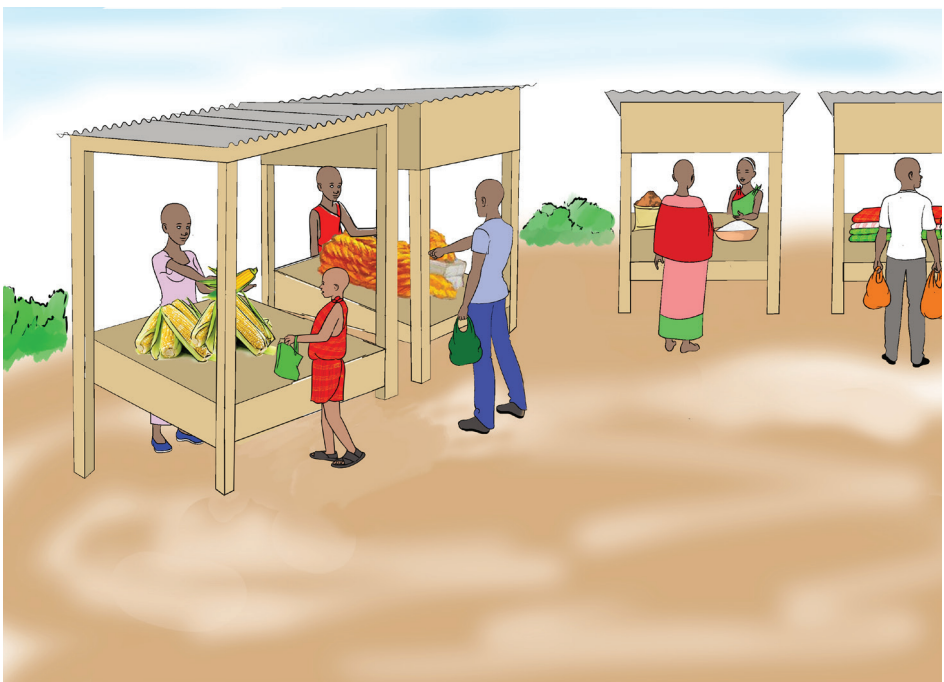
Enkias e are

Isuma kulo sirat.

1. Ekirura kewarie.
2. Ekipuo sukuul enkolong' e dukuya ewiki.
3. Ekiun ilpaek te nesha.
4. Ekindurrie nkishu to lameyu.

Enkias e uni

Esuma enkatini.



Eshomo Lerionka osokoni tadekenya e mampili kiti. Kumok ndaiki to sokoni to lapa lo loirujuruj. Neinyiang'u mpuka, olpaek ooshal. Neshuko ang' eton eitu edoyio enkolong'.

Nenya ina daa saa uni enkewarie.

Nkikilikuanat

1. Kainyoo eimaki ena atini?
2. Saa aja eshomo Lekishon osokoni?
3. Kaa olong' ewiki eshomo Lekishon osokoni?
4. Kalo apa eshomo Lekishon osokoni?

C. Emaigerisho

Enkias e dukuya

Tisipu kulo ilkigerot.

Ndiko ilkigerot meitayu rorei.

Aa Bb CHch

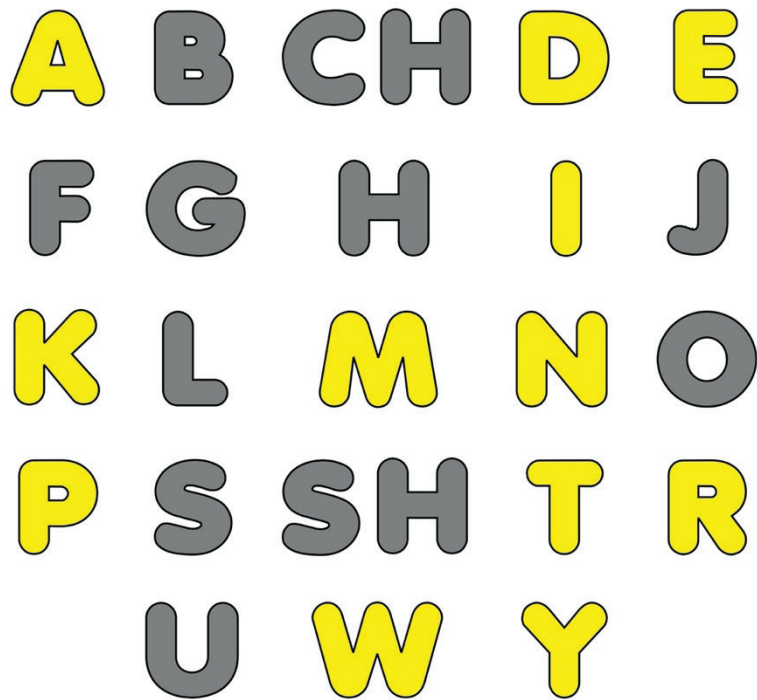
Dd Ee Ff Hh

Ii Jj Kk Ll

Mm Nn Oo Pp

Ss SHsh Tt

Rr Uu Ww Yy



Enkias e are

Mputa neetung' uayioki te kulo omon ooikenoro.

Entung'us teipa Oladalu tadekenya

1. Ekinyitoto oshi _____.
2. Ore _____ naa olapa le dukuya lolari.
3. Emurati ilayiok tolapa le _____
4. Eyierisho yieyioo _____.

Enkias e uni

- a) Nining'o ningerr kulo sirat.
- b) Ntoduaa ntoiwuo inonok lelo sirat lingo. Isumaki lelo sirat.

