

**NKAJI E NABO
MBUKU E LOOITENG'ENI**

NKUTUK EE SAMPUR

LAPA LE IMET, 2023

© Luturur Le KENYA INSTITUTE OF CURRICULUM DEVELOPMENT

Koree siai pookin Lotaasaki peeigeri ana buku naa Itungána Looigero aapeny looata mpaach neitainyie anaa sii loigerie mbaa noatii atua ana buku. Kore pooking'ai loyieu neitai anaa sii nesir. Kuna baa naa keishaakino peeingóru mpaach toololo aigerot.

Nkitainoto e kwe

©Luturur le Kenya Institute of Curriculum Development

ISBN NO 978-9914-43-259-6

Kore laigerok naa

Luturur le Kenya Institute of Curriculum Development

P. O. Box 30231-00100

NAIROBI-KENYA

Telephone: (020) 3749900-9, 3747994

Fax: 254 (020) 3639130

E-mail: info@kicd.ac.ke.

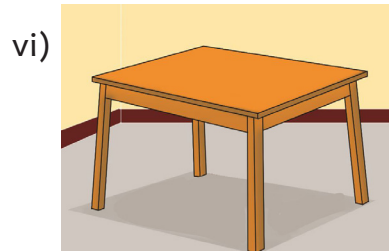
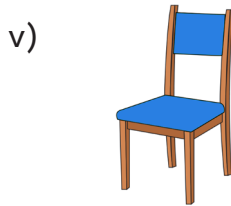
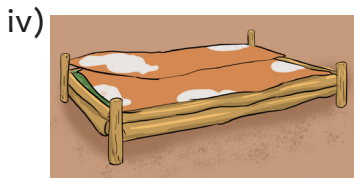
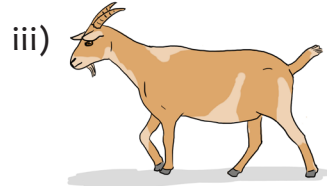
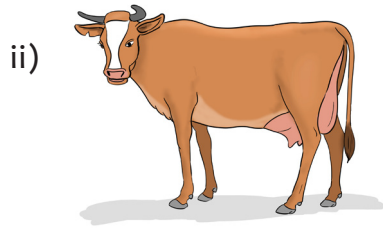
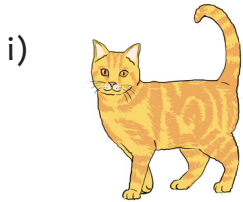
NAATII ANA BUKU

MOTUA E KWE: NKANG' AI	1
MOTUA E ARE: SUKUUL AI	10
MOTUA E UNI: LWENET SUPAT	17
MOTUA E ONG'WAN: BIOTISHO E SESEN	22
MOTUA E IMET: NKATITIN O NG'AMAT	31

A. NINING'O NIJO

Asata e kwe

Ng'ura pishai. Nyo idolita?



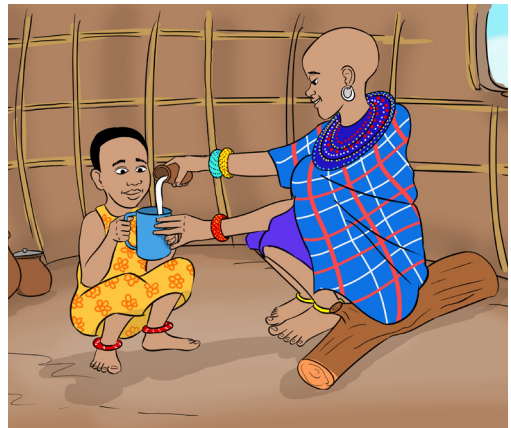
Asata e are

Keisom laiteng'enani nkatini. Nining'o nejo.

a.



b.



C.



Asata e uni

Nining'o mboitei ino. Taasa nejoito

Kejo;

- Tooro nkaji.
- Tujuto lorika.
- Nkeno mulanko.
- Ntibiraki mbukui inono.

B. MAIRORO

Asata e kwe

Nining’o singolio nirany tesedi laiteng’enani.

Nkang’ang’ supat
Nati ntok poooki
Nasham ntoiwo nkera
Nesham nkera ntoiwo

Nkai aai taasha
Tooki nkang’ang sidai
Nchoo yioo kule
Nincho nkishu nkujit

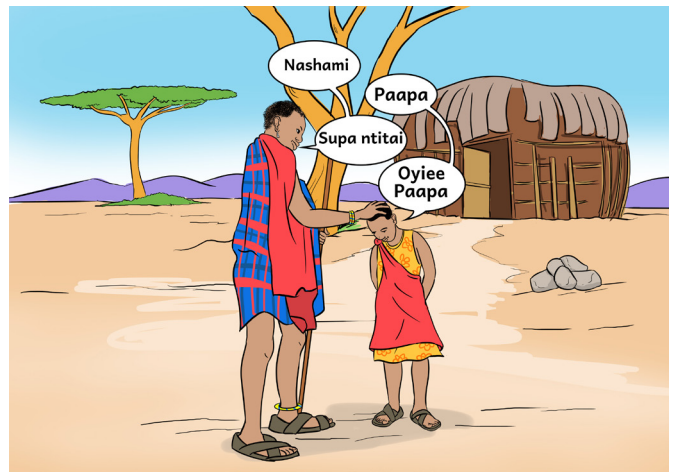
Asata e are

Ng’ura nijo nkurorokino

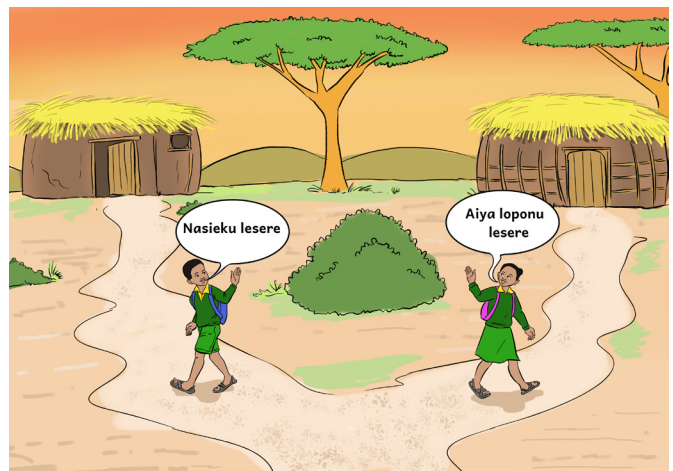
1. Serian iteperie?



2. Supa Paapa?



3. Lesere



4. Serian
itumutie
mpar?



5. Teperie Nkai



Asata e uni

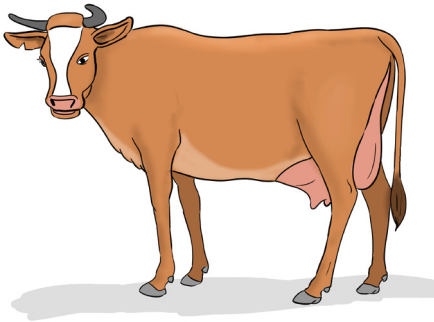
Maigurana nkuguran naitodol yioo
laiteng'enani

C. MAISOMA

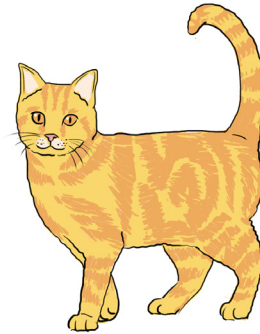
Asata e kwe

Ng'ura kuna pishai.Nyo idolita?

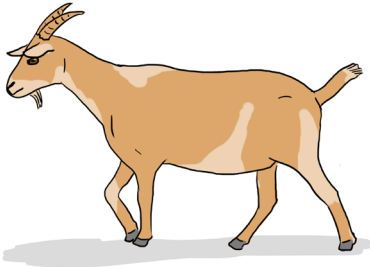
a)



b)



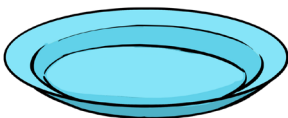
c)



d)



e)



f)



Asata e are

Tarrapu Nkaad nilimu ntoki nidolita

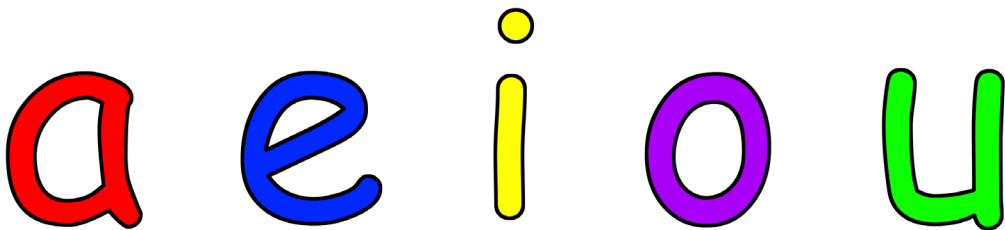
Asata e boo

Tenebo o ntoiwuo inono tilimu ntokitin o suom nidolita te nk-ang'

D. MAIGERO

Asata e kwe

Ng'ura mbuku ino. Tisira ntoki nidolita te loing'ang'e

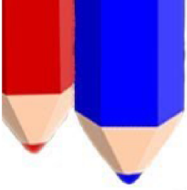


Asata e are

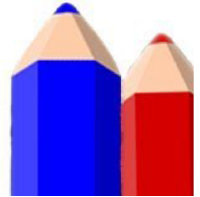
Taasishere mboitei ino ntibiru ltoiloshi lingerso duo te loing'ang'e te ntoki nikinchori.

Asata e uni

Tipika lkigerot ranki



Aa Bb CHch Dd Ee Gg Hh Ii
Jj Kk Ll Mm Nn Oo Pp Rr Ss
SHsh Tt Uu Ww Yy



MOTUA E ARE: SUKUUL AI

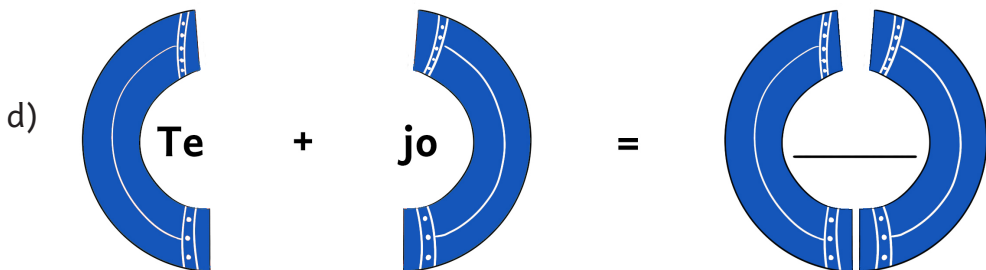
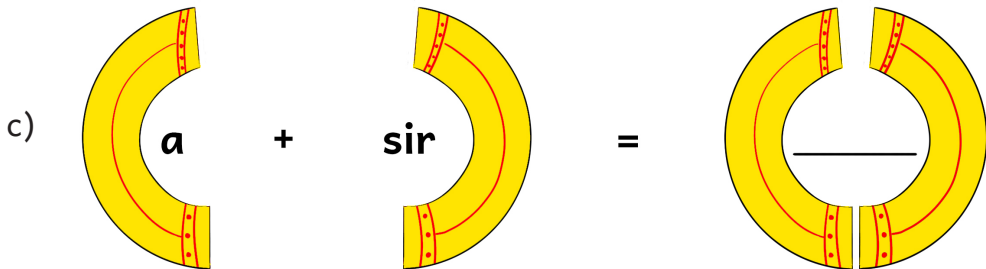
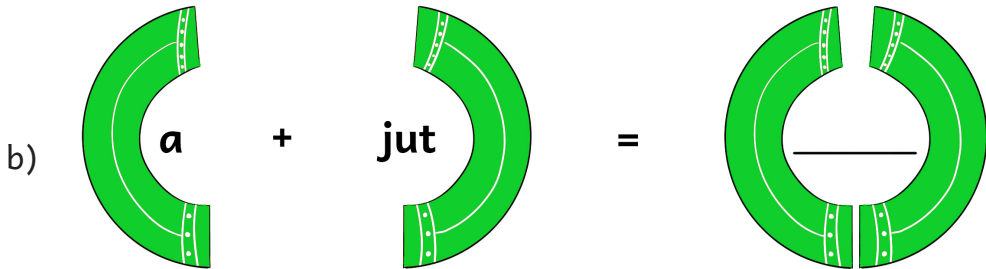
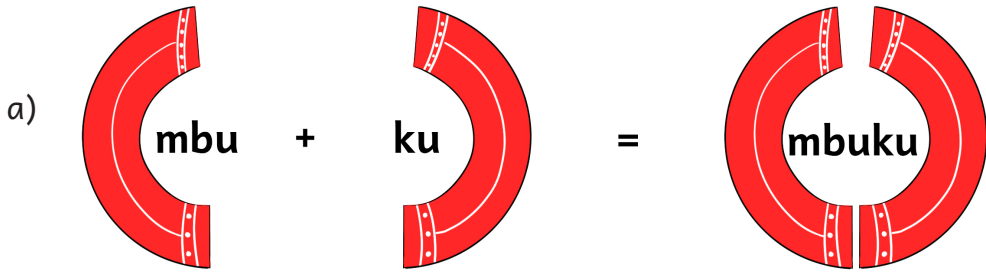


Maiteng'enata

Nyo idolita te pisha?

A. NINING'O NIJO

Asata e kwe



- a) Ng'ura pishai.
- b) Nyo idolita?
- c) Tiliki mboitei ino.
- d) Nining'o eisomita mboitei ino.

Asata e are

Ntibiru rereii tee rankin oopaasha.

Atuwuaa:

Ntibiru rerei te ligerot surwa

mi+sa=misa

Teeltururi,

- a) Ntibiru rerei tee lkigerot oonyekie pishai.
- b) Ntibiru rerei tee lkigerot oonyori pishai.
- c) Ntibiru rerei tee lkigerot darleiyo pishai.
- d) Esomakinoto rereii.
- e) Nining'o mboitei ino eisomita.

Asata e uni

Nining'o laiteng'enani ejo rereii.

a) Tooro rereii tee mbat naapasha.

Atuwuaa:

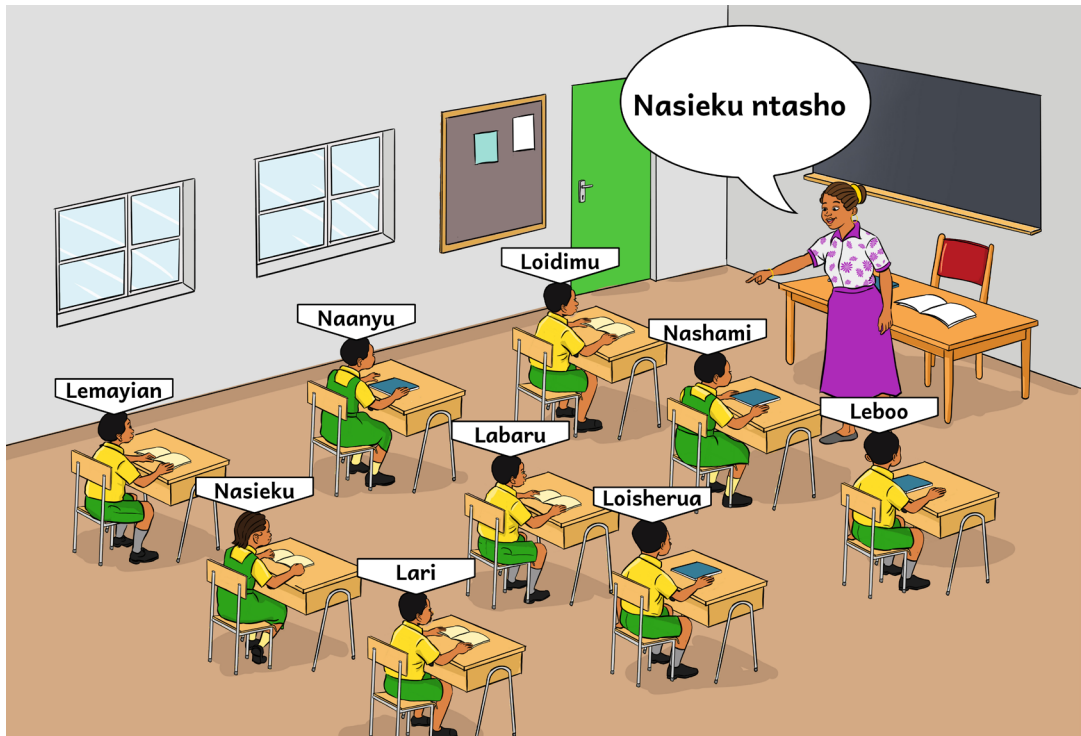
yeyo = ye yo

b) Soma kuna bat.

c) Nining'o mboiteii inono eisomita nenia bat

B. MAIRORO

Asata e kwe



a) Ng'ura pisha

b) Nyo ejokita laiteng'enani Nasieku metaasa?

c) Nyo easita Nasieku?

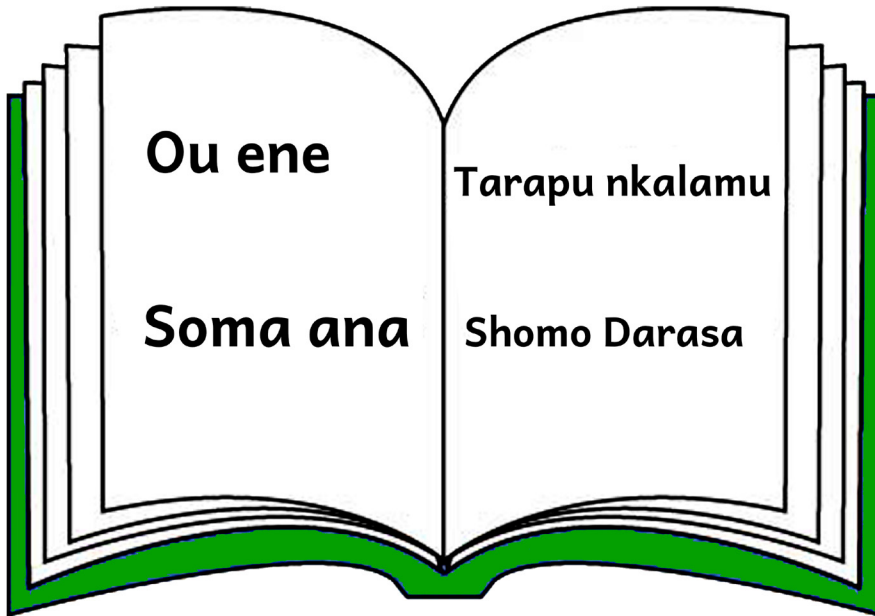
d) Aanyo peanyit Nasieku laiteng'enani?

Asata e are

Nining'o nejo laiteng'enani.

- a) Taasa nejoki yuoo laiteng'enani .
- b) Aanyo piianyit laiteng'enani?

Asata e uni



Ng'ura ana pisha natii keper

- a) Tiliki mboitei ino neas.
- b) Taasa nikijoki mboitei ino.

C. MAISOMA

Asata e kwe

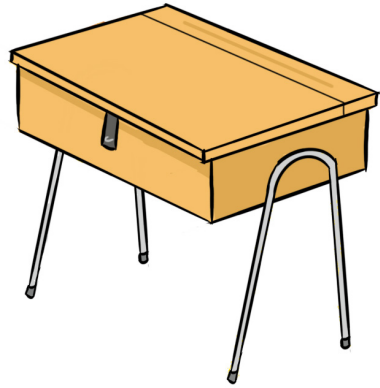
Teeltururi:

a) Ng'ura pishai.

i)



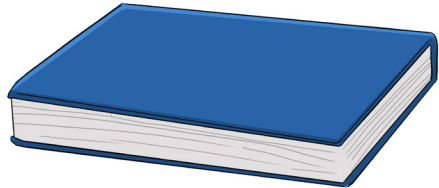
ii)



iii)



iv)



b) Tejo lkigerot lekwe tee kulo rereii

Asata e are

maare are,

a) Mpoto nkarn ee ntokitin naatumi te sukuul.

- b) Soma rereii.
- c) Tisira rereii te nkitabuu ino.

Asata e boo

Somaki ntoiuo inono rereii litisira.

D. MAIGERO

Asata e kwe

Ngero kulo rereii te loing'ang'i.

- a) Misa
- b) Lorika
- c) Pindira

Asata e are

Mputuu lkigerot lemetii.

- a) Mb_ku
- b) L_rika
- c) M_sa
- d) Lb_ene

Asata e uni

- a) Nining'o laiteng'enani eisomita lkigerot.
- b) Tisira lkigerot.

MOTUA E UNI: LWENET SUPAT



Maiteng'enata

Nyo idolita te pisha?

A. NINING'O NIJO

Asata e kwe

- Nining'o nkatini.
- Nyo elikita yioo nkatini?
- Mpoto nkarn ee ltung'ana te nkatini.
- Mpoto rereii looitodolu lwenet supat te nkatini.

Asata e are

Tenebo

- a) Nining’o Nkatini najo laiteng’enani.
- b) Ngila nkatini natejo laiteng’enani.

B. MAIORO

Asata e kwe

- a) Taranya ele singolio

Kajo karibu teneponu lomon.

Nairigo tanairoroki lomon.

Najo lesere tenepuo lomon.

Najo ashe tanatum lasim.

Kajo kaaomon ntoki tanayeu.

Kajo sore tanaitariki ltung’ani.

- b) Nyo eipirita nkatini?

Asata e are

- a) Taasa nejo kulo kigerot

Nashami: Lemayian, kaaomon nkalamu nabo

Lemayian: Sore Nashami. Nkalamu nabo ake aata. Toomono
Loeku amu keata are.

Nashami: Aiyia ashe.

Lemayian: Aiya nashami.

- b) Akwa rereii ooitodolu lwenet supat te nkirot?
- c) Tejo lkulie rereii looitodolu lwenet supat.

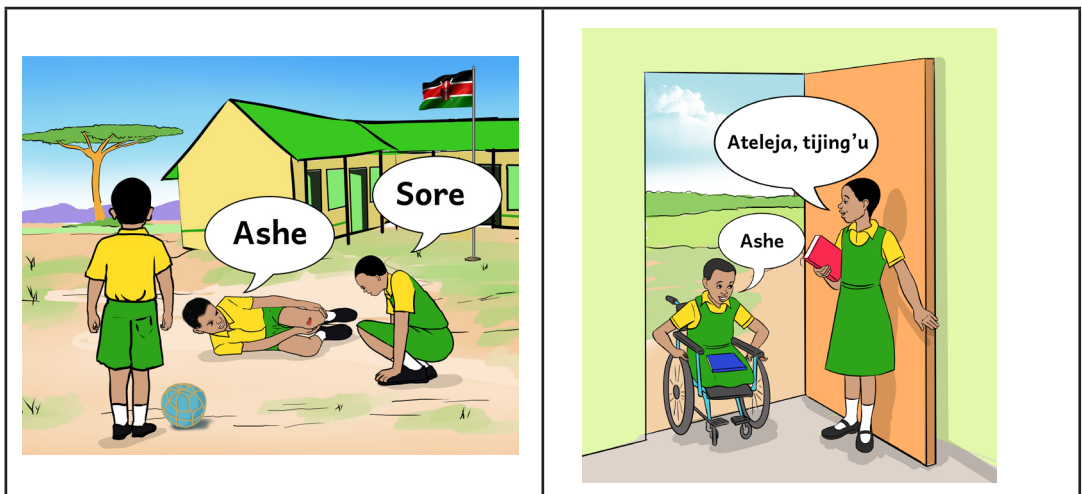
Asata e uni

Tee Itururi, maigurana

- a) Tarrapu rerei te nkikapu.
- b) Ntodua lkulie tururi.
- c) Nchoo meitibiru rereii metaa sira.

C. MAISOMA

Asata e kwe



Tee Itururi,

- a) Ng'ura pisha.
- b) Nyo idolita?
- c) Soma rereii lootii pisha.

Asata e are

- a) Keliki ntae Imaalimoi sinkolio liranyrany.
- b) Akwa rereii te sinkolio looitodolu lwenet supat?

D. MAIGERO

Asata e kwe

- a) Nining'o laiteng'enani mikisomaki rereii.
- b) Ngero rereii te nkitabu ino

Asata e are

Nkeno mpaach te rerei obo too looikenoro aitibire sirat.

- a) _____ toosho Itwala. (ashe, kaaomon)
- b) _____, kaidim ashomo boo? (kaamon, aiyia)
- c) _____ amu kaishiliwana. (katejo, sore)
- d) _____ te nkalamu. (Ashe, sore)

Asata e uni

Ngero kuna sirat

1. Kaaomon nchooki nkalamu.

2. Sore kaiturayie nkitabu ino.
3. Ashe kitapalika.
4. Kintoomoni te sukuul.

MOTUA E ONG'WAN: BIOTISHO E SESEN



Maiteng'enata

Nyo idolita te pisha?

A. NINING'O NIJO

Asata e kwe

Nining'o sinkolio nirany tesedi laiteng'enani

Kaigita lalaa,kaigata lalaa

Iga,iga,iga.

Iga,iga,iga.

Taasa naasita?

Taasa naasita?

Iga,iga,iga.

Kaisilito lpapit,kaisilito lpapit

Silo,silo,silo

Silo,silo,silo

Taasa naasita?

Taasa naasita?

Silo,silo,silo

Asata e are

Tiliki laiteng'enani lino

Nyo eas nkerai tesiran?

Nyo eas nkerai te sukuul?

Asata e uni

Nining'o nijo.

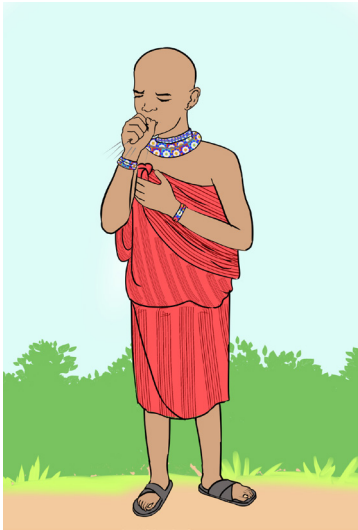
i)



ii)



iii)



iv)



Asata e boo

- a) Taranyaki ntoiwo inono sinkolio.
- b) Taranyaki lchoreta linono sinkolio te nkang'.

B. MAIRORO

Asata e kwe

Tejo kulo rerei tesedi laiteng'enani.



Nkisilet

	<p>Nkige</p>
	<p>Saibuni</p>
	<p>Nkipakiyo</p>

Asata e are

Taranya ele sinkolio.

Iga, iga lalaa

Iga, iga lalaa

Iga mpari pokii

Iga mpari pokii
Ngida ,ngida,ngida,ngida
Biotisho supat

Asata e boo

Taranya ele sinkolio te mpari. e sukuul.

C. MAISOMA

Asata e kwe

Ng'ura pisha. Tiliki mboitei ino ntoki nidolita.



Asata e are

Soma kuna aitinin.

Nkatini e kwe;

Laisotok supati

Kore laisotok otii latukuny meisupati.

Keitomoi yuoo.

Kasham laisotok supati.

Maitibira laisotok lang metaa supati.

Nkatini e are;

Nkaik naaituko

Keji nkarna ai naisherua .

Nana yeyio lai.

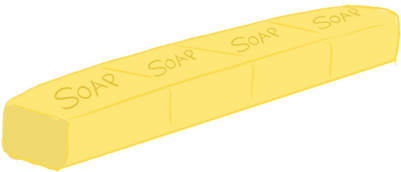
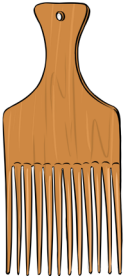

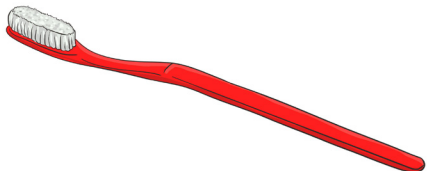
Kuntutuko nkaik ang'.

Kisham nkaik supati.

D. MAIGERO

Asata e kwe

Ngero asat e kuna tokitin.

Nkarna	Nyo easeki
<p data-bbox="141 257 268 295">Saibuni</p> 	<hr data-bbox="685 456 1176 466"/>
<p data-bbox="141 561 275 599">Nkisilet</p> 	<hr data-bbox="685 818 1176 828"/>
<p data-bbox="141 904 248 942">Nkare</p> 	<hr data-bbox="685 1275 1176 1285"/>
<p data-bbox="141 1447 241 1485">Nkige</p> 	<hr data-bbox="685 1589 1176 1599"/>

Asata e are

Mputu mpaach nang'or.

- a) Nk___ ge
- b) Nt ___ ko
- c) ___ga
- d) s___lo

Asata e uni

Ngero kulo kigerot

Tudung'o _____

Tujuto _____

Ntusupata _____

Ntuko _____

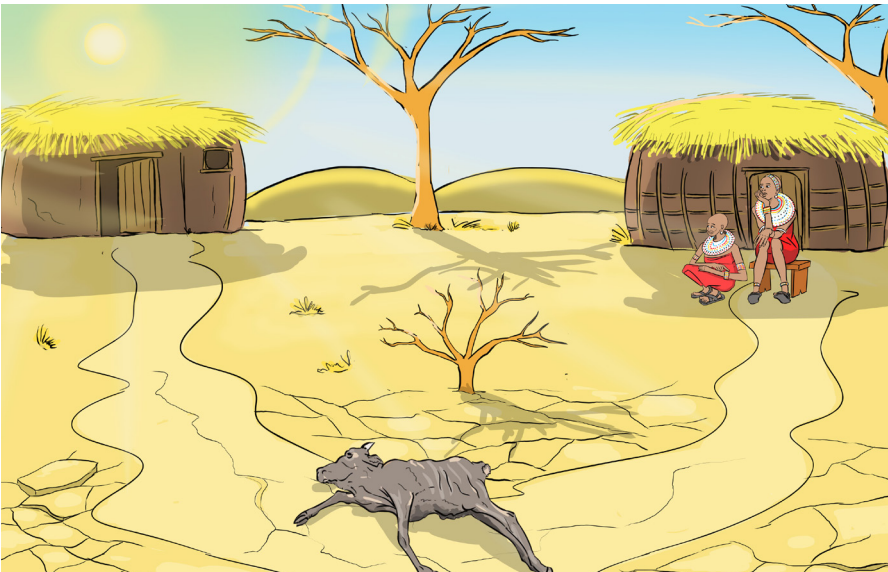
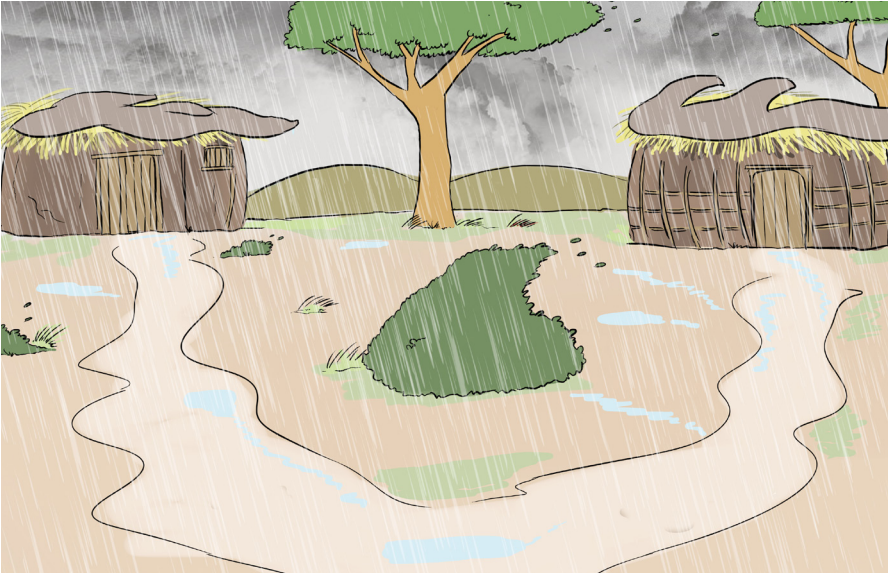
Asata e boo

Tinilo nkang' ntibiru pisha nipik rangi.

i) Nkige

ii) Nkitampaa

MOTUA E IMET: NKATITIN O NG'AMAT



Maiteng'enata

Nyo idolita te pisha?

Nyo easita ltung'ana teinia ng'amata?

A. NINING'O NIJO

Asata e kwe

Tejo ainiapu laiteng'enani.

Tesiran.

Nkata napoi sukuul.



Parkiji.

Nkata nanyai ndaa eparkiji.



Teipa.

Nkata naigurani.



Kwaarie



Asata e are

Taranya tesedi laiteng'enani.

Saai sapa taata.

Nkata nanyai ndaa

Saai ong'wan .

Nkata naigurani.

Saai sapa .

Nkata nanyai ndaa.

Asata e boo

Taranyaki ntoiuw inono ilo sinkolio tinilo nkang’.

B. MAIORO

Asata e kwe

Taranya ele sinkolio

C. MAISOMA

Asata e kwe

Tarapu rerei nisom.

<i>Lapa le obo</i>	<i>Lapa le waare</i>	<i>Lapa le okuni</i>
<i>Lapa le ong’wan</i>	<i>Lapa le imet</i>	<i>Lapa le ile</i>
<i>Lapa le sapa</i>	<i>Lapa le iset</i>	<i>Lapa le saal</i>
<i>Lapa le tomon</i>	<i>Lapa le tomon oobo</i>	<i>Lapa le tomon waare</i>

Asata e are

Soma kuna sirat.

1. Ikilura kwaarie.
2. Ikipuo sukuul kutuka jumatatu mpaka jumaa.
3. Ikipuo nkang'ite lapa le ong'wan
4. Ikuun lpaeg ng'amata nasha nchan.

Asata e uni

Nkatini

a) Tilimu ntoki nidolita te pisha.



b) Tejo ana atini

Nana Nasieku. Mpari e arpa tesiran. Ketejo Nasieku sinkolio.
Keting'idete ntoiwuo oleng'

- c) Tilimu kuna kiparat
- i) nyo eipirita ana nkatini?
 - ii) Saai aja iniakata?
 - iii) Aapari e wiki inia?
 - iv) Alo apa ilo?

D. MAIGERO

Asata e kwe

Ntutumo kulo kigerot meitibira rerei

Asata e are

Tegelu rerei obo tee kulo mputie mpaach

jumatatu teipa lapa lekwe tesiran

1. Ikinyototo _____.
2. _____ olotu tekwe e lari.
3. _____ Mpari e kwe e wuki.
4. Keyer yeyo ndaa _____.

Asata e boo

Ntoduaa ntoiwuo sirat tinilo nkang’.